

T-7/8-N; R-7-W

LINE TABLE

NO.	DIRECTION	LENGTH
L1	N 89°39'54" W	31.57'
L2	N 05°07'35" W	21.41'
L3	S 00°54'56" W	21.53'
L4	N 78°03'35" E	47.35'
L5	N 78°03'35" E	40.20'
L6	S 00°54'56" W	2.36'
L7	S 88°56'21" E	53.73'
L8	N 38°38'48" W	47.55'
L9	N 37°43'56" W	37.96'
L10	N 80°44'16" E	41.00'

① CONST. C ② CONST. C
 Δ = 33°05'36" Right Δ = 15°59'20" Left
 D = 03°00'00" D = 05°00'00"
 T = 567.42' T = 160.93'
 L = 1,103.11' L = 319.78'
 R = 1,909.86' R = 1,145.92'

▨ = AREA RELEASED BY M.O.#

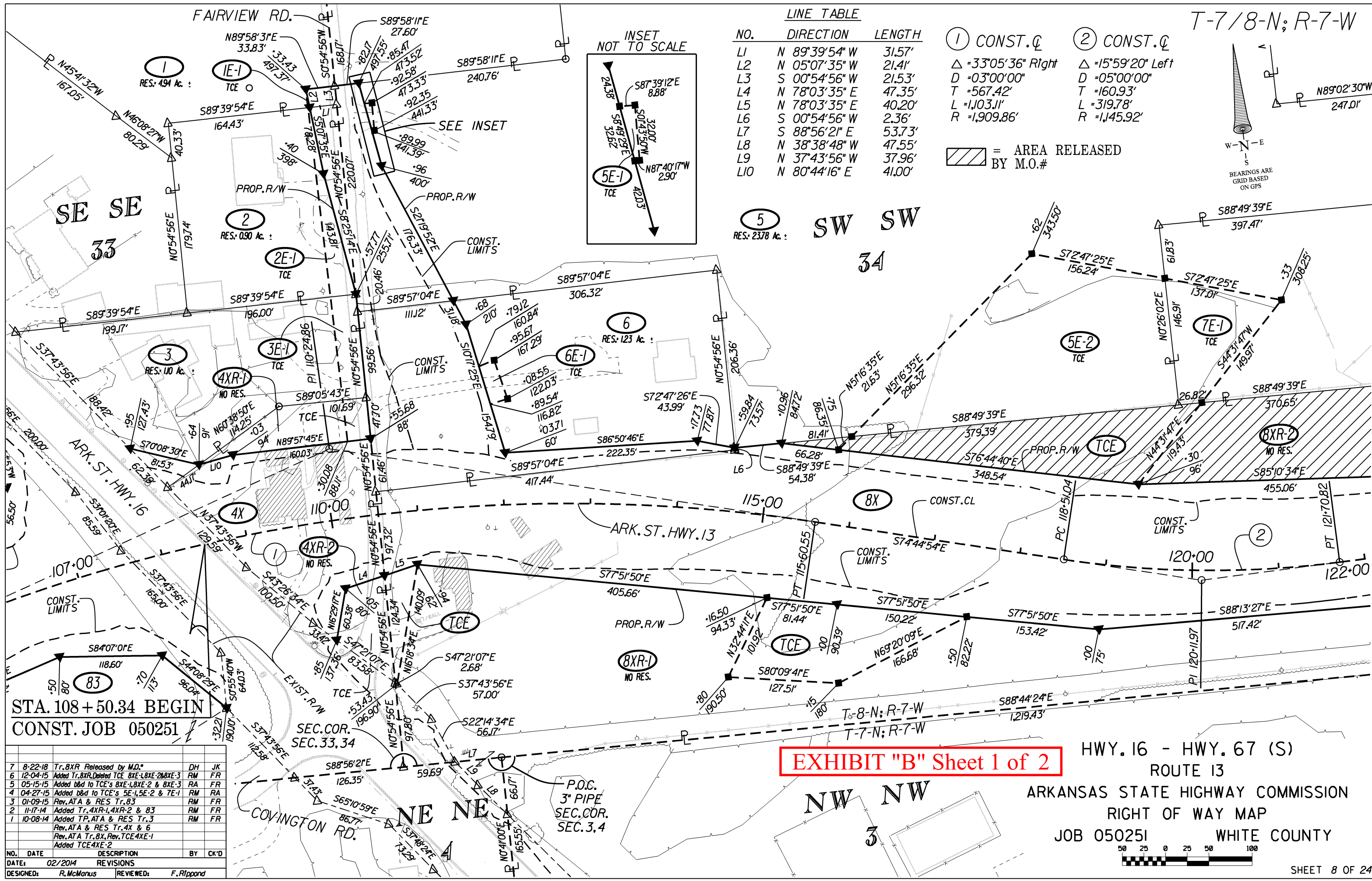
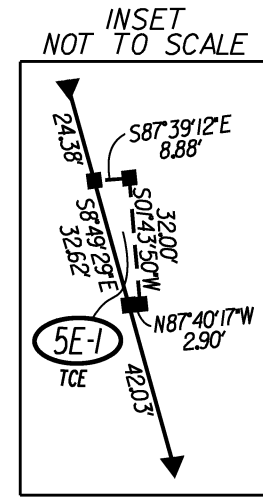
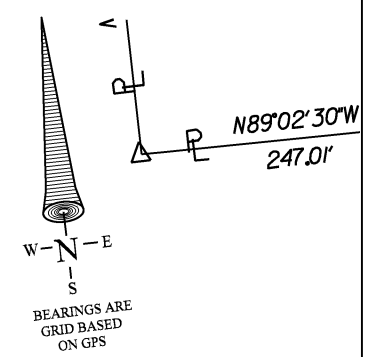
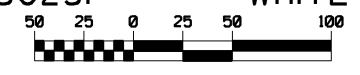


EXHIBIT "B" Sheet 1 of 2

HWY. 16 - HWY. 67 (S)
 ROUTE 13
 ARKANSAS STATE HIGHWAY COMMISSION
 RIGHT OF WAY MAP
 JOB 050251 WHITE COUNTY



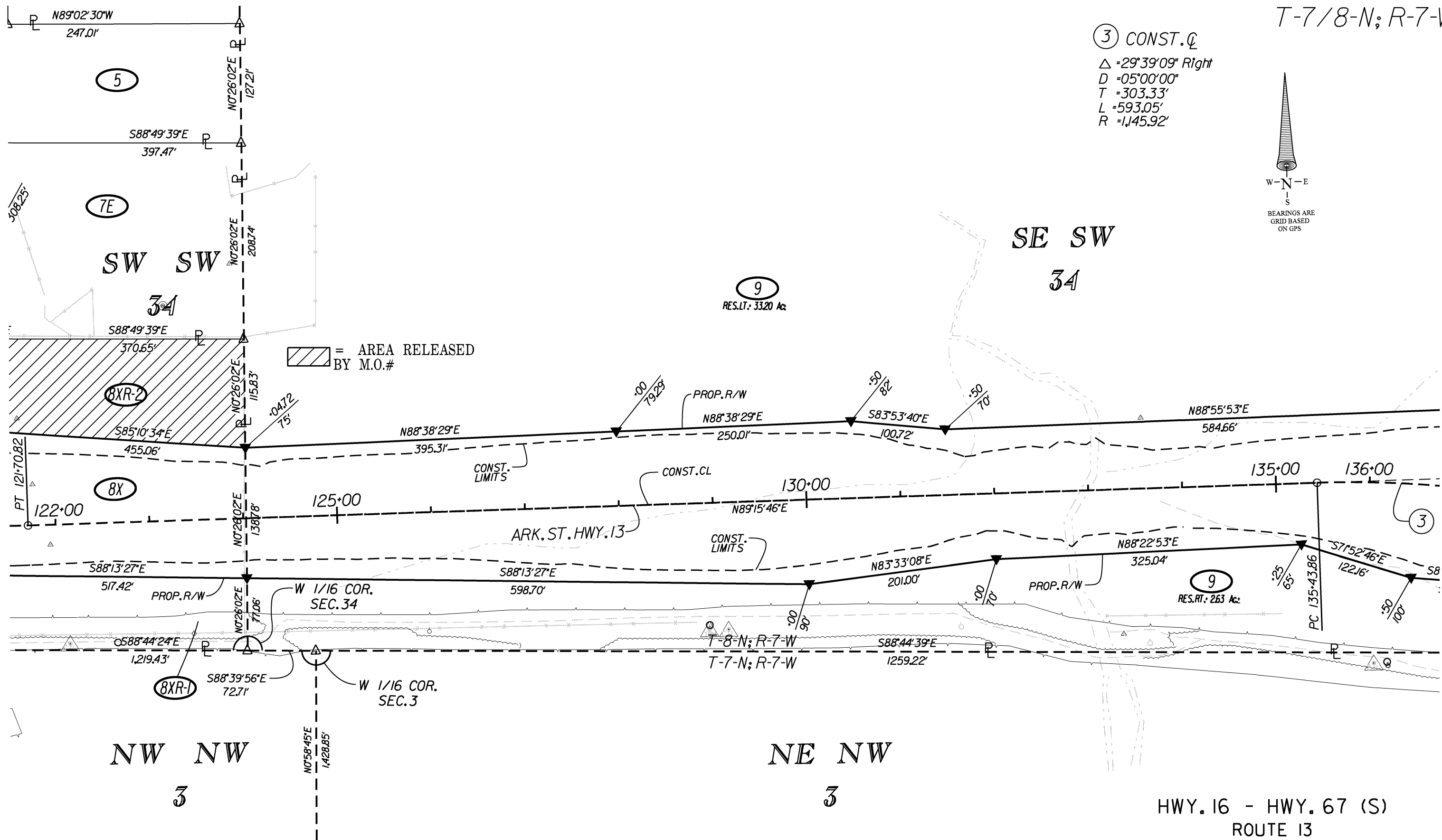
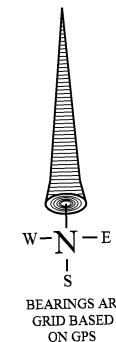
NO.	DATE	DESCRIPTION	BY	CK'D
7	8-22-18	Tr. 8XR Released by M.D.*	DH	JK
6	12-04-15	Added Tr. 8XR, Deleted TCE 8XE-1, 8XE-2 & 8XE-3	RM	FR
5	05-15-15	Added bld to TCE's 8XE-1, 8XE-2 & 8XE-3	RA	FR
4	04-27-15	Added bld to TCE's 5E-1, 5E-2 & 7E-1	RM	RA
3	01-09-15	Rev. ATA & RES Tr. 83	RM	FR
2	11-17-14	Added Tr. 4XR-1, 4XR-2 & 83	RM	FR
1	10-08-14	Added TP, ATA & RES Tr. 3	RM	FR
		Rev. ATA & RES Tr. 4X & 6		
		Rev. ATA Tr. 8X, Rev. TCE 4XE-1		
		Added TCE 4XE-2		

DESIGNED: R. McManus REVIEWED: F. Rippard

T-7/8-N; R-7-W

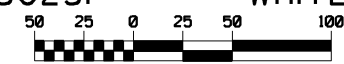
③ CONST. C

Δ = 29°39'09" Right
D = 05°00'00"
T = 303.33'
L = 593.05'
R = 1,145.92'



HWY. 16 - HWY. 67 (S)
ROUTE 13
ARKANSAS STATE HIGHWAY COMMISSION
RIGHT OF WAY MAP
JOB 050251 WHITE COUNTY

EXHIBIT "B" Sheet 2 of 2



NO.	DATE	DESCRIPTION	BY	CK'D
2	8-22-18	Tr. 8XR Released by M.O.*	DH	JK
1	12-04-15	Added Tr. 8XR	RM	FR
DESIGNED:	R. McManus	REVIEWED:	F. Rippard	